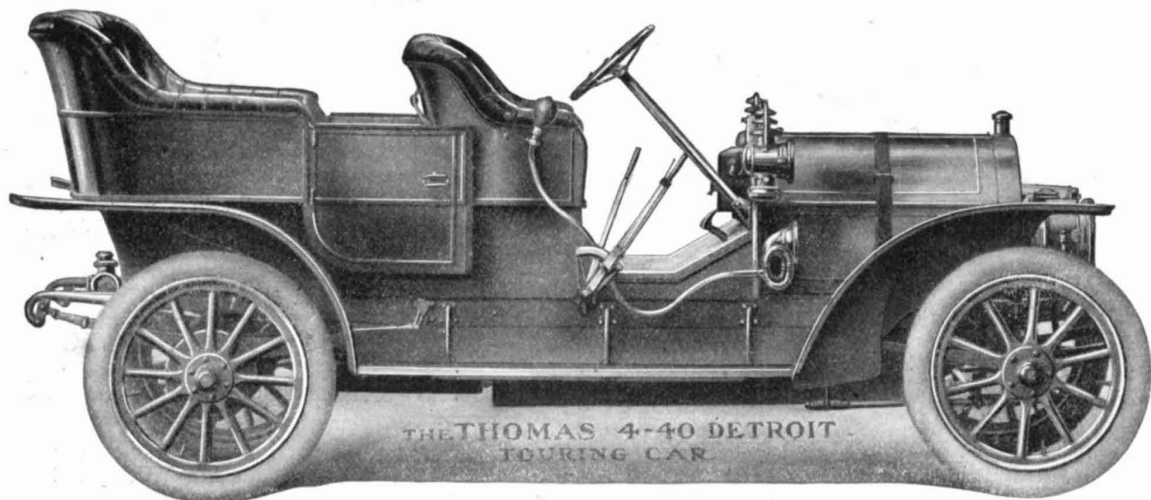


THOMAS 1908

A complete line of Motor Cars of the highest quality possible in Design, Material and Workmanship. They will do what you wish your car could do



PRICE, \$2,750

Thomas 4=20 Towncar

The original Towncar, designed for City and Suburban use exclusively. Beautiful bodies, quiet operation; low cost of maintenance. The Society Car.

Thomas 4=60 Flyer

Winner of hundreds of contests of speed, hill-climbing, reliability, and endurance. Has more records than any American car. This year improved, enlarged, and refined.

Thomas 4=40 Detroit

Best of all shaft-drive cars. In power, speed, hill-climbing, and reliability the Thomas Detroit leads the five passenger class.

Thomas 6=70 Special

The six-cylinder model of the Thomas Flyer, built by America's pioneer six-cylinder builders. The greatest car in America in speed, size, reliability and refinement.

Thomas Cars Succeed

E. R. THOMAS MOTOR COMPANY

Member A. L. A. M.

Buffalo.