

Chalmers "Forty" Fore-door Touring Car—\$2800

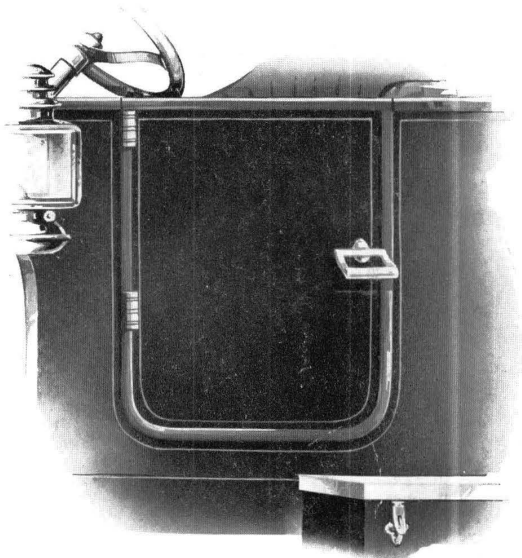
Please note the new Chalmers types announced in this folder

There have been a few additions to the Chalmers line since this catalog was issued.

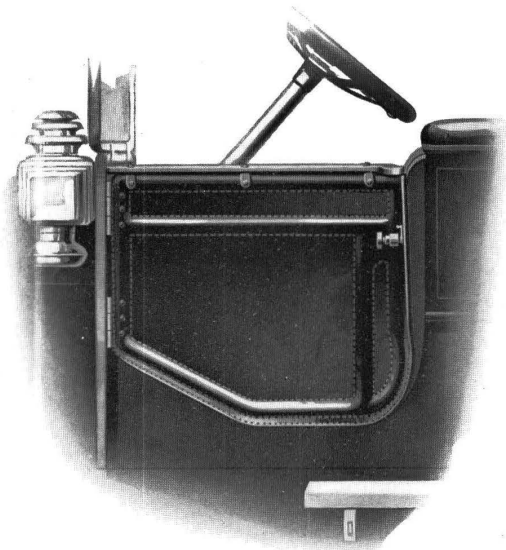
The "Forty" Touring Car, shown above, is now equipped with forward doors. This is the regular seven-passenger type. It differs from the 1911 "Forty" Touring Car, shown elsewhere in this catalog, only in having the front seats enclosed. The price with fore-doors is \$2800.

Fore-doors for the "30" Touring Car are of a detachable type, giving a car readily adaptable to all conditions of weather. The "30" fore-doors are of high grade patent

leather to match the body, built on substantial forged frames and crowned with black walnut to har-



Detail of Fore-door, Chalmers "Forty"

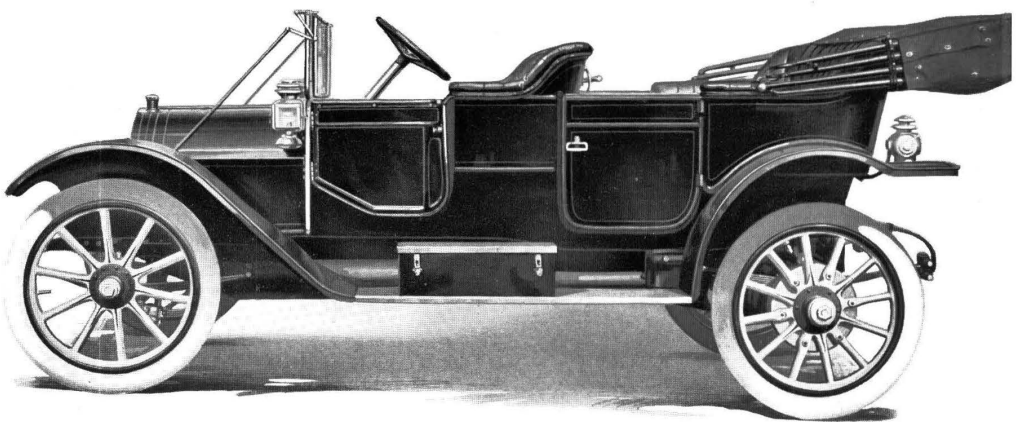


Detachable Fore-door for Chalmers "30"
Touring Car

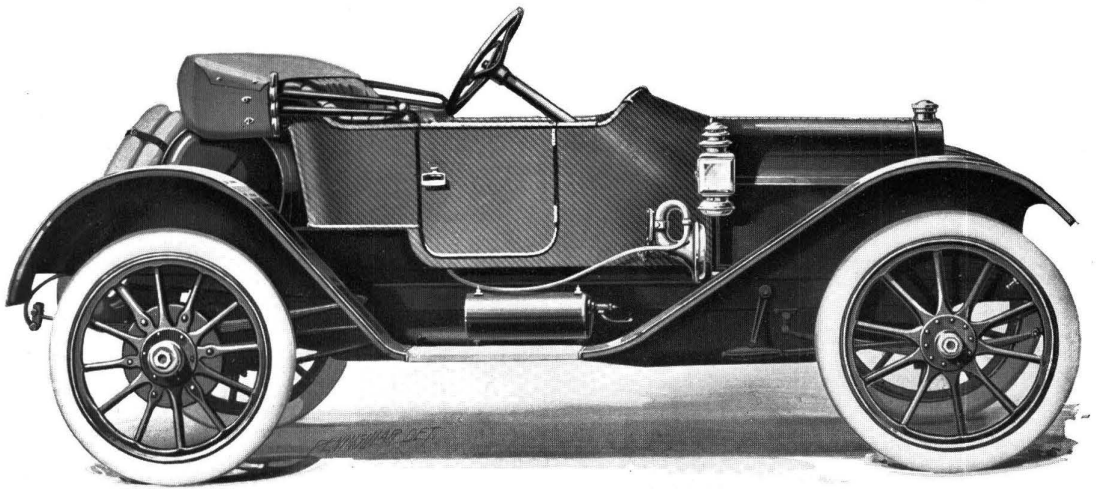
monize with the dash and tonneau doors. These doors afford all the protection of permanent fore-doors, give the same appearance to the car, yet they are easily removable in warm weather. These detachable

doors are in harmony with the design of the "30" Touring Car and form an altogether high-class equipment. They are supplied at a charge of \$15.00.

The Chalmers "30" Limousine is now regularly equipped with fore-doors. These add materially to the protection and comfort of driver and outside passenger. Fore-doors also enhance the general appearance of the Limousine, giving to the front of the car a substantial look quite in keeping with the whole design. These doors are not detachable, but are made integral with a specially designed Limousine body. The price remains unchanged—\$3000.



Chalmers "30" Touring Car with Detachable Fore-doors



Chalmers "30" Torpedo Runabout—\$1500, fully equipped with magneto, extra tire irons, full set of gas and oil lamps, Prest-O-Lite tank, horn, jack, tools and Chalmers top with side curtains and storm front

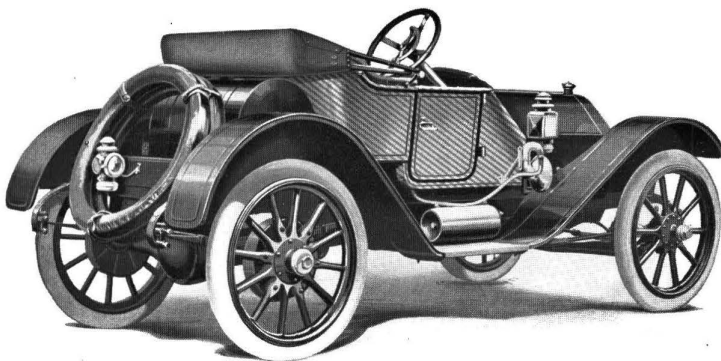
The New Chalmers Runabout

In addition to the above fore-door types, we wish to announce a new type of the Chalmers "30"—the Torpedo Runabout. This car is designed purely as a runabout for those desiring a racy looking, speedy, comfortable two-passenger car. It is built with the usual Chalmers attention to quality and refinement.

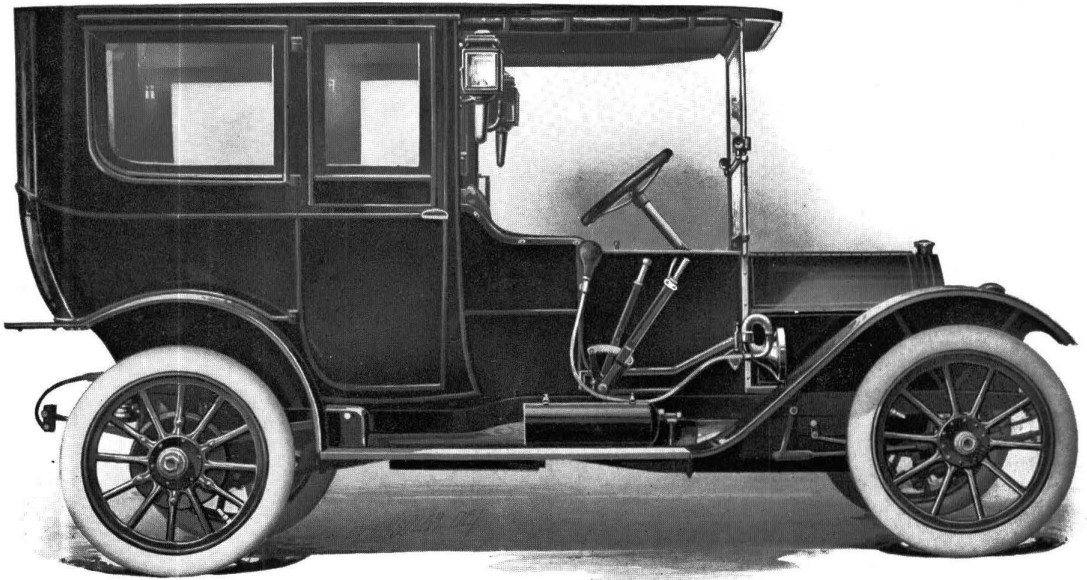
The Torpedo Runabout has the same motor, clutch, transmission,

steering gear and axles as the regular Chalmers "30" chassis. The only notable difference from the regular "30" chassis is in wheel base. The Torpedo Runabout wheel base has been made 104 inches, as the shorter wheel base is desirable in a car of this type.

The seat is generously wide for two persons and is enclosed with wide torpedo doors. Gear shift and brake levers are inside the body.



Rear View of Torpedo Runabout, showing location of Gasoline Tank and Extra Tire Irons



Chalmers Limousine with Forward Doors — \$3000

As in all Chalmers models, the body is low-hung to give the greatest riding ease.

Three attractive color schemes are optional. One is English vermilion body, black chassis with striping of English vermilion. The second is Napier green body, black chassis with striping of Napier green. The third is Chalmers blue body with black chassis.

The gasoline tank is of exceptional size. It holds 35 gallons and hardly requires refilling oftener than once a week for ordinary city driving. It is carried just back of the seat. It is enameled black to harmonize with the chassis.

So too, gas lamps and Prest-O-Lite tank are of special black enamel finish.

The top is of dark gray mohair, harmonizing perfectly with either color combination. When folded it fits close to the back of the seat. These tops are made in our own shops. The whole combines to produce a car of which any one may be proud. It has a style all its own.

The regular equipment includes a Bosch magneto, extra tire irons, complete set of tools, horn and full set of oil and gas lamps, Prest-O-Lite tank and top.

Not the least attractive feature of this new Chalmers model is the price—\$1500 equipped as described above.

CHALMERS MOTOR COMPANY
DETROIT, MICH., U. S. A.