

Chalmers "30" Torpedo Roadster

\$1500—Fully Equipped



This monogram on the radiator stands for all you can ask in a motor car

THERE are roadsters and roadsters, but here is one that will stand wear and tear and give satisfactory service for a long period. It will always look well.

Have you ever seen a car with classier or prettier lines? Moreover, it is finished with extreme care. It gives that tailor-made-just-out-of-the-pantry impression. It is a Chalmers through and through. Built especially for business men, physicians, real estate men, insurance men, salesmen, contractors and others whose time is money. There are no limits to the number of uses of this car for that big army of business conquerors to whom being at the right place at the right time means everything.

The Chalmers "30" roadster enables the business man to do more things in less time and with less energy. The physician can make more calls. The real estate man, insurance man, and salesman can see more people. The contractor can keep in closer touch with all his jobs and have time to organize still more jobs.

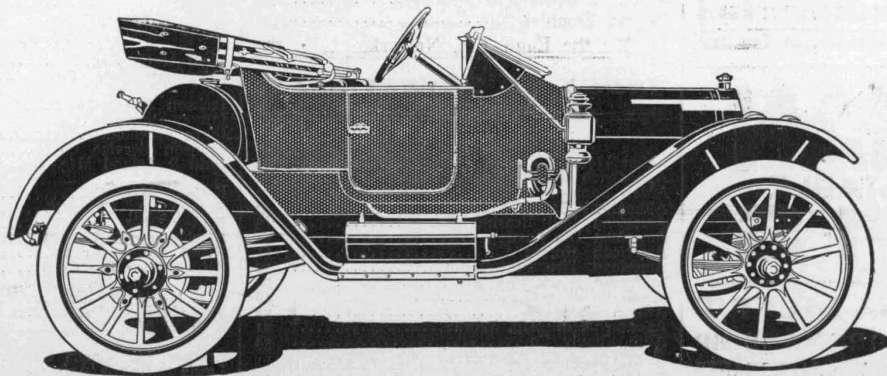
This car is a graceful, speedy, comfortable, two-passenger car. It is as handy and convenient as a car can be. It is sturdy and reliable. It is guaranteed.

Full equipment means magneto, Chalmers mohair top and automatic windshield, oil lamps, Solar gas lamps, ventilator, horn, tools, tire repair outfit, tire irons and a big gasoline tank—one that needs filling about once a week—your choice of three attractive color schemes.

These cars are on display at all our dealers, who will be glad to assist you in a thorough inspection.

If you desire, you can secure from us a coupe body to fit the same chassis as the "30" roadster for use in inclement weather.

Chalmers Motor Company, Detroit, Mich.



1912 "30" Roadster, 2-Passenger—\$1500

Including magneto, Prest-O-Lite tank, gas lamps, oil lamps, top, windshield, tire irons, ventilated fore-doors, horn, tools

In writing to advertisers please mention THE HORSELESS AGE.