

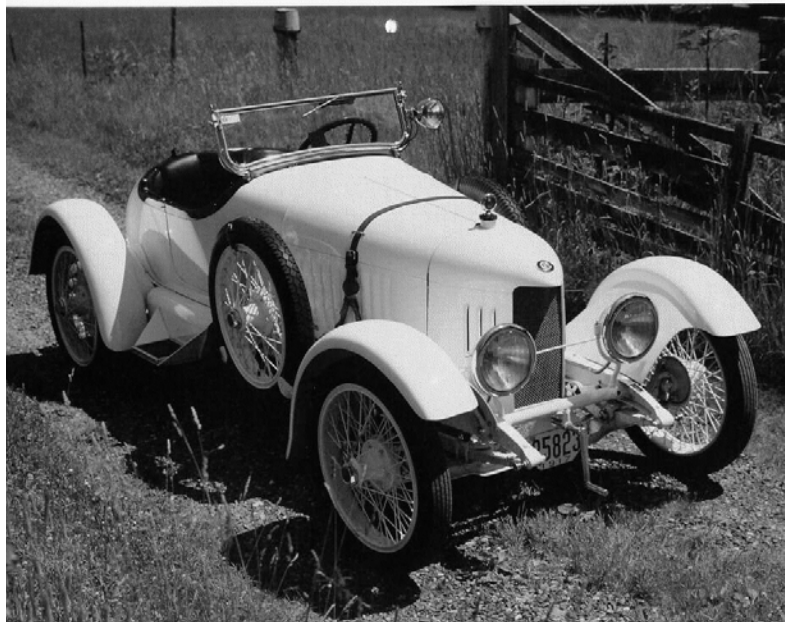
# The Chalmers Automobile Newsletter

Published by the Chalmers Automobile Registry, © 1997

## Happy New Year to all!

This issue of the newsletter contains some new developments that occurred since the last issue in May 1996 with a special focus on the famous Chalmers race cars.

- In July, I retired from the Navy and am now working part time as an engineering consultant.
- At the August car show held in Macungie, PA (known as "Das Awkscht Fest") I found a 1915 Model 32 B on display. The owner, Joe Alackness of Royersford, PA, did not know about the Chalmers Registry and now he is member #16. His Chalmers was also shown at the Hershey fall meet in October. Joe gave me a list of Chalmers owners who were not members. I've sent letters and registration forms to each of them. Three responses have been received to date and they are listed after Joe's name on the enclosed membership list. Three owners have not responded yet. They are C. W. Josey of Lynchburg, SC (1917 race car), Tom Knight of Hiawatha, IA (1916 Model 35 A) and Lee Lemens of Madison, WI (1915 Touring). If anyone knows these owners or has contact with them please pass the word to them about the registry. That also goes for any other owners among the missing.
- Joe Alackness also told me about the July publication of "Automobile Quarterly" which features an article about the 1917 Chalmers Record Speedster owned by Bob Valpey (member #17). I contacted "AQ" and obtained a copy. The article has some very good photos and historical data about the Chalmers Company and the race car. The back cover features an embossed replica of the Chalmers monogram. A color photo of this car is also available on the Internet by using InfoSeek and looking under automobiles. This is a beautifully restored and maintained car and I have included a black and white copy of the Internet image here for your enjoyment. This particular car set the 24 hour average



speed record of 81.4 mph on August 1-2, 1917. It thus is dubbed the "Record Speedster" and has a brass plaque on the dash to certify the achievement. Congratulations to Bob on a very fine car.

SOME BASIC FACTS  
ON THE  
CHALMERS RACE CARS

- Factory race cars were manufactured and used for advertising purposes.
- Early race cars were stock or semi-stock models; later versions were true racers in stock clothing.
- Chalmers posted successful wins in a variety of races. Major wins included the: Glidden Tour, Vanderbilt Cup Races, Candler Trophy Races, Crown Point Races, and Pikes Peak hill climb.
- Six 1917 special speedsters were designed and built specifically for racing. In 1918, "Motor Age" claimed that 25 were planned. Who knows how many were actually made and how many remain today?
- The 1917 speedster was based on the L-head Six-30 cast in a single block with 224 cubic inches of displacement. Pistons were die-cast lynite and weighed only 11.5 ounces each. Wheelbase of the 2800 pound car was 117 inches with 32 X 4 inch wire wheels and U. S. Royal cord tires. The carburetor was a two-stage Stromberg unit which allowed the 55 horsepower engine to rev to 2600 rpm. Engine lubrication was an automatically controlled full pressure system. A standard sliding gear type transmission with three speeds forward and one reverse was employed. The rear axle was semi-floating with a final drive ratio of 3:1.

That's all for now; please pass on your questions, comments or new information for the next newsletter.

Dave Hammond