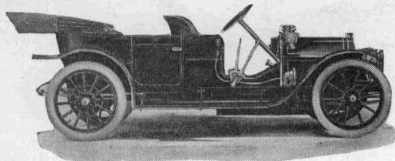


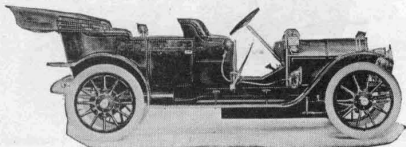
**Chalmers Gasoline Pleasure Cars.**

Made by the Chalmers Motor Company, Detroit, Michigan.



CHALMERS "30," TOURING CAR, \$1500.

This model has either runabout or touring body, seating five; motor, 4 cylinder, en bloc, 26.3 A. L. A. M. rating; 4 x 4 1/2 inches; one valve in the head and one in the side, water cooled by gear driven centrifugal pump; tubular radiator; splash lubrication from plunger pump; 18 gallon gasoline capacity; ignition, jump spark from Exide storage battery, magneto extra; multiple disc clutch, steel to bronze, three speed sliding change gear on ball bearings under the floor boards; two brakes, contracting on rear wheels, cast iron to steel and transmission brake; tires, 34 x 3 1/2 inches; wheel base 115 inches; weight 2400 pounds.

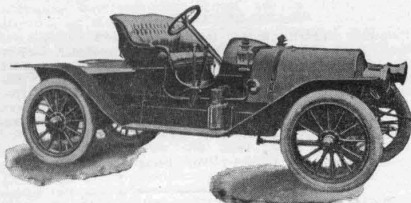


CHALMERS FORTY, MODEL J, \$2750.

This model is fitted with runabout, touring and pony tonneau bodies, seating up to seven passengers. Motor, 4 cylinder, cast in pairs; 40 H. P., at 1200 r. p. m.; 5 x 4 3/4 inches, water cooled by gear driven centrifugal pump, cellular radiator; valves on opposite sides of the head; splash and force feed lubrication from gear pump; jump spark ignition from Bosch magneto as standard, Exide storage battery in reserve; two sets of plugs; gasoline capacity, 18 gallons; leather faced cone clutch; three speeds sliding gear; shafts mounted on ball bearing; pressed steel frame, up-swept at the rear; shaft drive; semi-elliptic springs at the front; three quarter elliptic at the rear; tires, 36 x 4 inches; wheel base, 122 inches; weight, 3100 pounds.

**Manlius Gasoline Pleasure Vehicles.**

Made by the Manlius Motor Co., Manlius, N. Y.



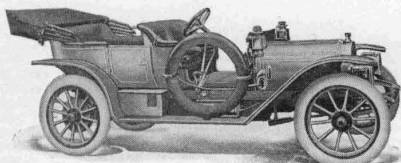
Manlius roadster, \$1250; passenger capacity, two; motor, 4 cylinder; 28 H. P. air cooled; selective sliding change gear; shaft drive; 34 x 3 1/2-inch tires; 108-inch wheel base.

**MANLIUS RUNABOUT, \$725 WITH RUMBLE SEAT.**

Three passenger runabout; 12 H. P.; two cylinders; planetary change speed gear; shaft drive; 86-inch wheel base; 32 x 3-inch tires.

**Maryland Gasoline Pleasure Cars.**

Made by the Sinclair-Scott Co., Baltimore, Md.



MARYLAND, MODEL H, TOURING CAR, \$2750.

Maryland, Model H, 5 passenger touring car body; motor, 28 H. P.; 4 cylinders; 4 1/2 x 4 inches cast separately; water cooled by shaft driven gear pump; splash and force feed lubrication, positive and mechanical oiler, all valves in the head; jump spark ignition from magneto; 18 gallon gasoline tank; frame straight on top; semi-elliptic front springs; full-elliptic rear springs; leather faced cone clutch; 3 speed sliding gear, direct on high; expanding and contracting raybestos faced brakes on rear wheels; tires 34 x 4 inches; wheel base 116 inches; weight 2700 pounds; bodies are of aluminum.

**MARYLAND, MODEL H, TOY TONNEAU, \$2750.**

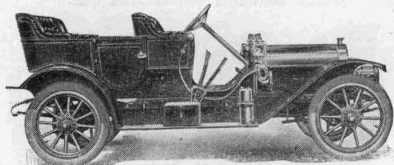
Maryland, Model H, 4 passenger toy tonneau body; specifications same as the Model H touring car, except weight, 2600 pounds.

**F. A. L. Gasoline Cars.**

Made by the Fal Motor Co., Chicago, Ill.

**F. A. L., MODEL M, TOY TONNEAU, \$1750.**

F. A. L., Model M, 2-4-5-passenger toy tonneau; 35-40 H. P.; 4 cylinders, cast in pairs; 4 1/2 x 5 1/4 in. water cooled; circulation by pump; valves all located on left side; thermoid faced cone clutch; 3-speed sliding change gear transmis-



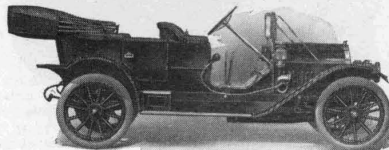
sion with direct on high; 2 sets of thermoid lined brakes, expanding and contracting on the rear wheels; lubrication by force feed and splash with pump; jump spark ignition; by Kurtz high tension magneto with dry cells in reserve; frame up-swept over rear axle; semi-elliptic springs front and 3/4 elliptic rear; weight 2650 pounds; 116-in. wheel base; tires 34 x 3 1/2 in. front and 34 x 4 in. rear; wheels mounted on ball bearings.

**Hudson Gasoline Cars.**

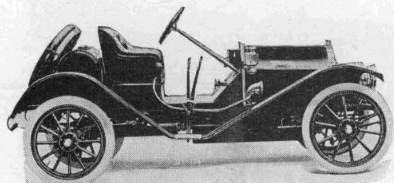
Made by the Hudson Motor Car Co., Detroit, Mich.

**HUDSON 20, 5-PASSENGER TOURING CAR, \$1150.**

Hudson 20, 5-passenger Touring Car; 20 H. P.; 4 cylinders cast en bloc, 3 3/4 x 4 1/2 in.; water cooled; circulation by pump; valves all on right side; leather-faced cone clutch; 3-speed sliding transmission; with direct on high; 2 sets of brakes, expanding and contracting on the rear wheels;



lubrication by splash with pump; jump spark ignition by dry cells; frame up-swept over rear axle; semi-elliptic springs front and 3/4 elliptic rear; weight 2000 pounds; 110-in. wheel base; 32 x 3 1/2-in. tires front and rear; wheels mounted on ball bearings.



HUDSON 20, ROADSTER, \$1000.

Hudson 20, 3-passenger Roadster; weight 1800 pounds; 100 in. wheel base; all other specifications same as Touring Car Model.